

Swivel castor with total lock SMMST 201 PEK

Extra Heavy Duty Series SMM - Wheel PE

-40 °C - +80 °C

- +++

swivels easily
- +++

wear resistant
- +++

shock proof
- +++

floor protective
- +++

weather proof

Wheel



Casted high quality nylon wheel

Fork

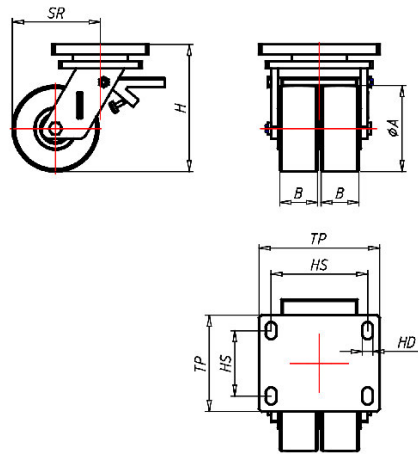
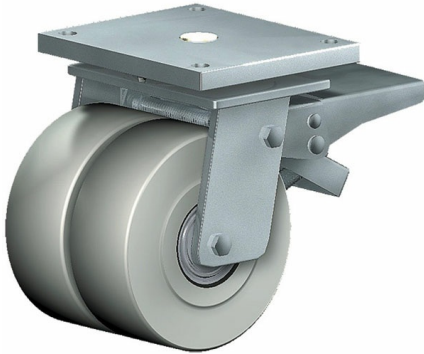


Solid steel welded construction, with axial grooved ball bearing DIN 711 and tapered roller bearing DIN 720, very strong integrated Kingpin, with grease nipple, sealed with 2 o-rings finish: alu-grey painted on request: zinc-plated and passivated (chrom VI-free)

Swivel castor with total lockWheel-Ø A x width B mm: 200x55+55	
Load Capacity kg:	5000
Load capacity tested according to EN 12530 and EN 12527	
Overall height H mm:	295
Dimension of top plate TP	260x200
mm:	
Hole spacing HS mm:	210x160
Hole-Ø HD mm:	21
Swivel radius SR mm:	183
Wheel bearing:	Ball bearing

Advantages

- ✓ for extra heavy loads
- ✓ easy running on smooth floors
- ✓ impact proof
- ✓ high abrasion resistance
- ✓ easy to clean
- ✓ high chemical resistance



Applications

- Metal-Technology
- Heavy duty dollies
- Trash container trucks
- Machinery moving dollies
- Workshops
- Racks
- Building-Industry